

# Parts List

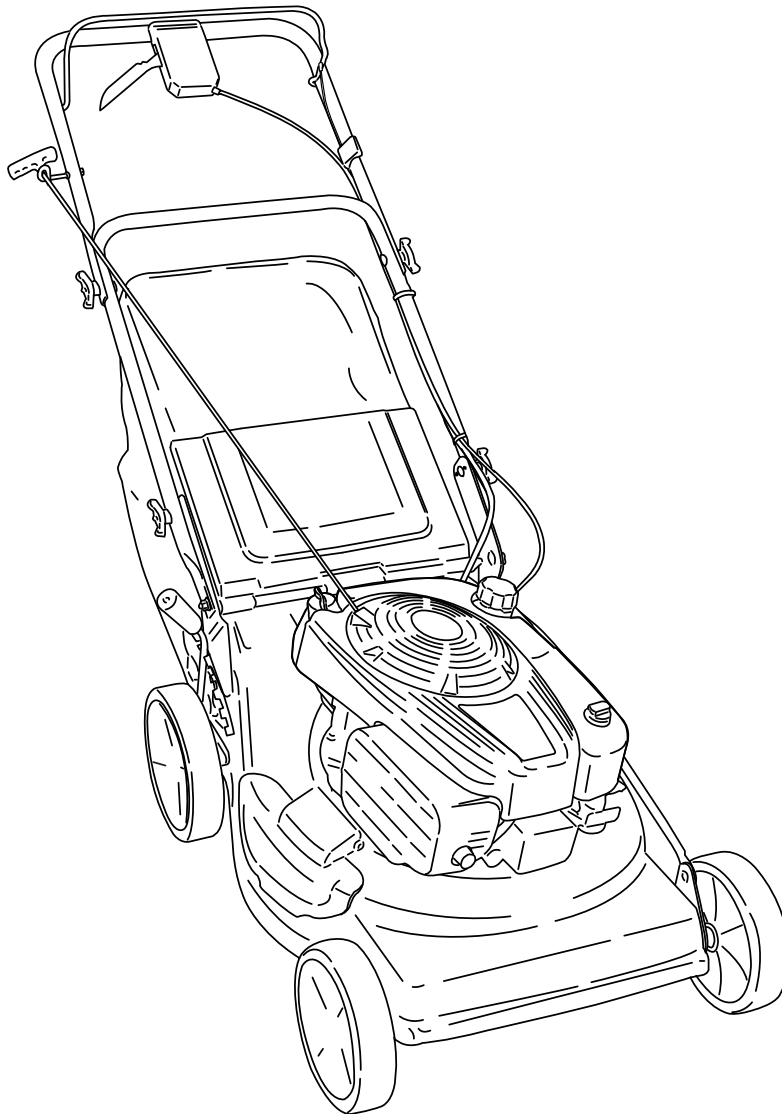


## Models

**Mfg. No.**  
7800671

**Description**

BBRR219BS, 21" Bad Boy 8.75GT Walk Behind Mower  
(2010)



7104314  
Revision B  
Rev. Date 04/2010

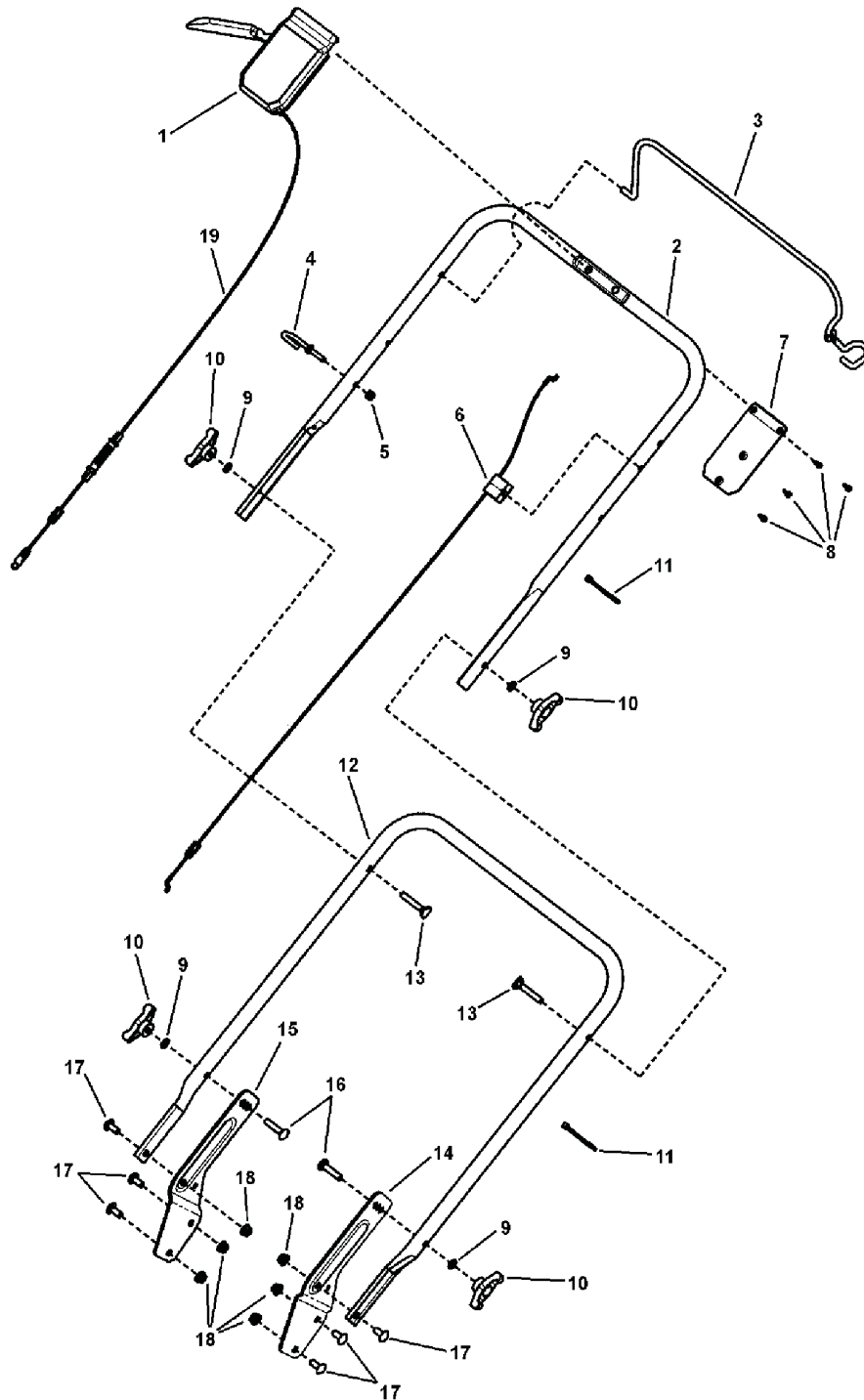
<b>PRODUCT COMPONENTS</b>	<b>PAGES</b>
Handle Assembly Group .....	4
Engine & Blade Group .....	6
Transmission Group .....	8
Wheels & Height-of-Cut Group .....	10
Decals .....	12
Mower Deck Group .....	14
<b>Torque Specification Chart .....</b>	<b>Inside Back Cover</b>

Not for  
Reproduction

## Handle Assembly Group

NOTE: Unless noted otherwise,  
use the standard hardware torque  
specification chart.

bbrd\_hd1



The above parts group applies to the following Mfg. Nos.:  
7800671 - BBRR219BS

## Handle Assembly Group

REF NO	PART NO.	QTY.	DESCRIPTION
1	7101892MA	1	ASSEMBLY, Control Head, Single Speed, Brute (Includes Ref. No. 19)
2	7300676AMA	1	HANDLE, Upper, Propelled
3	7101731AMA	1	BAIL, OPC Propelled Brute
4	7028488MA	1	GUIDE, Rope (1/4-20 thread)
5	7076978SM	1	NUT, 1/4-20 Hex Nyloc
6	7101395YP	1	CABLE, Bail, 22" Walk-Behind Mower
7	7300130AMA	1	PLATE, Control Panel
8	7100225YP	4	SCREW, #8-16 Torxplus Recessed Pan Head, Twin Helix
9	7090391SM	4	WASHER, 5/16" Internal Tooth lock
10	7035744YP	4	KNOB, 5/16-18 Wing (Black)
11	7024649YP	3	WIRE TIE, 11 Inch Std Black Nylon
12	7300592AMA	1	HANDLE, Lower 21" RD
13	7091189YP	2	BOLT, 5/16-18 x 2" Curved Head Square Neck, GR 2
14	7300573ZMA	1	BRACKET, Lower Handle, LH, 21" WBM, RD
15	7300574ZMA	1	BRACKET, Lower Handle, RH, 21" WBM, RD
16	7091612SM	2	BOLT, 5/16-18 x 1-1/2" Round Head Square Neck, YZ
17	7091508SM	6	BOLT, 5/16-18 x 3/4" Round Head Short Square Neck, GR 5, YZ
18	7091601SM	6	NUT, 5/16-18 Hex Flange lock, YZ
19	7101398YP	1	CABLE, DRIVE

Not for  
Reproduction

### Footnotes

---

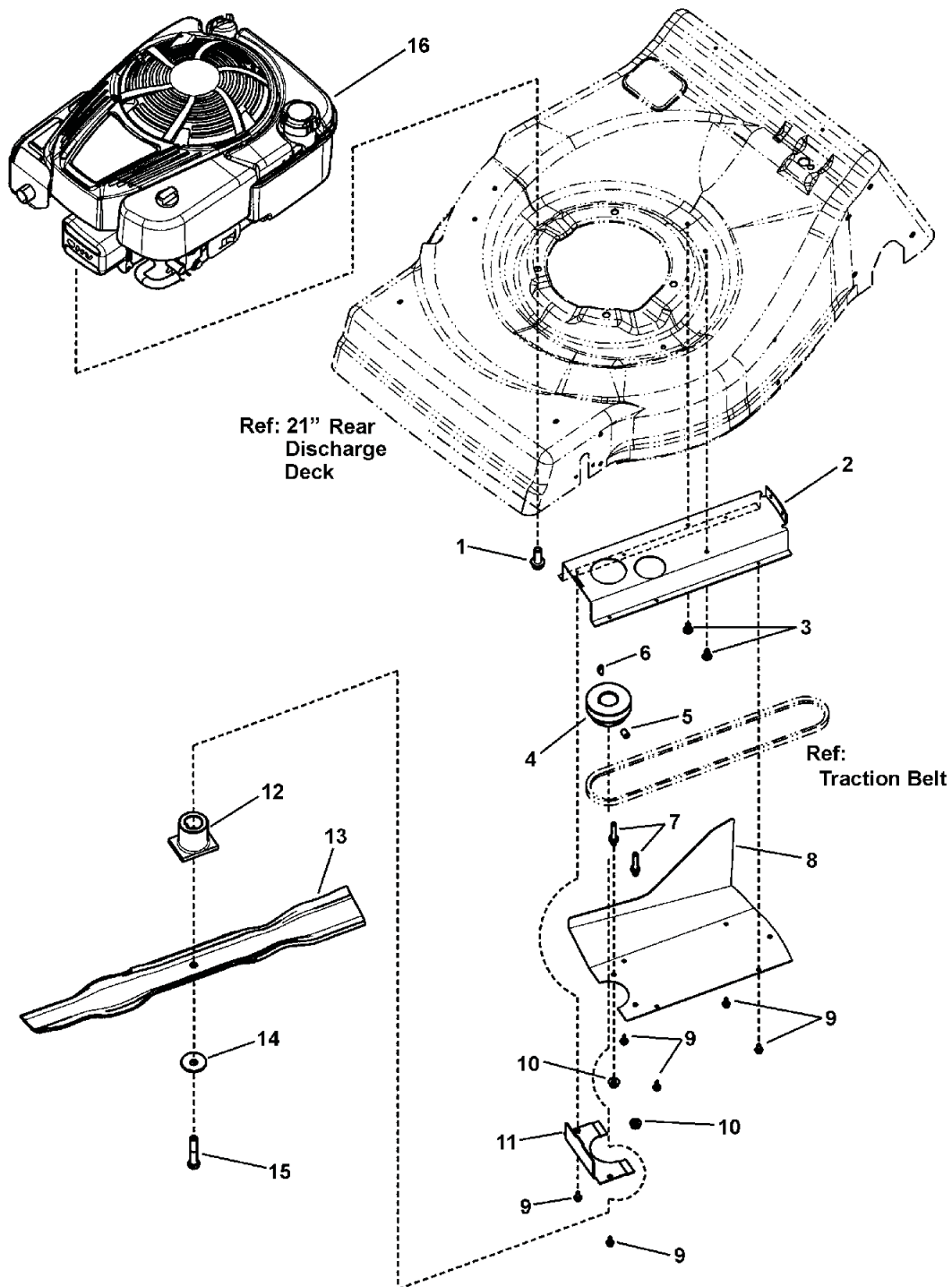
The above parts group applies to the following Mfg. Nos.:

7800671 - BBRR219BS

# Engine & Blade Group

bbrd\_eng

NOTE: Unless noted otherwise,  
use the standard hardware torque  
specification chart.



The above parts group applies to the following Mfg. Nos.:  
7800671 - BBRR219BS

## Engine & Blade Group

REF NO	PART NO.	QTY.	DESCRIPTION
1	7090324SM	3	SCREW, 3/8-16 x 1" Hex Washer Self-Tap
2	7300725YP	1	BELT GUARD
3	7900067YP	2	SCREW, 1/4-20 x .550 Torx Self-Tap
4	7100437YP	1	PULLEY, Engine
5	7092086YP	1	SET SCREW, 5/16-18 x 1/2" Hex Recess
6	7091214YP	1	KEY, #HP-506 Hi-Pro
7	7101313YP	2	BELT GUIDE, Engine, 21" RD (1/4-20 thread)
8	7300596ZMA	1	COVER, Belt Guard
9	26X259MA	6	SCREW, #10-16 x 1/2", AB, w/Washer
10	7091584SM	4	NUT, 1/4-20 Hex Flange Lock, YZ
11	7300724YP	1	COVER, Belt
12	7101414YP	1	BLADE HUB, 21" WBM, Rear Drive, 2 Position
13	7100242AYP	1	BLADE, Wave, 21" Steel Deck
14	7012063SM	1	WASHER, Cone
15	7090167SM	1	SCREW, 3/8-24 x 2" Hex Head Cap, GR 5
16	12S972-0137-B1	1	* ENGINE, Briggs 875 Gross Professional Torque Series

Not for  
Reproduction

### Footnotes

NOTE: \* Purchase engine parts from engine manufacturer dealer.

---

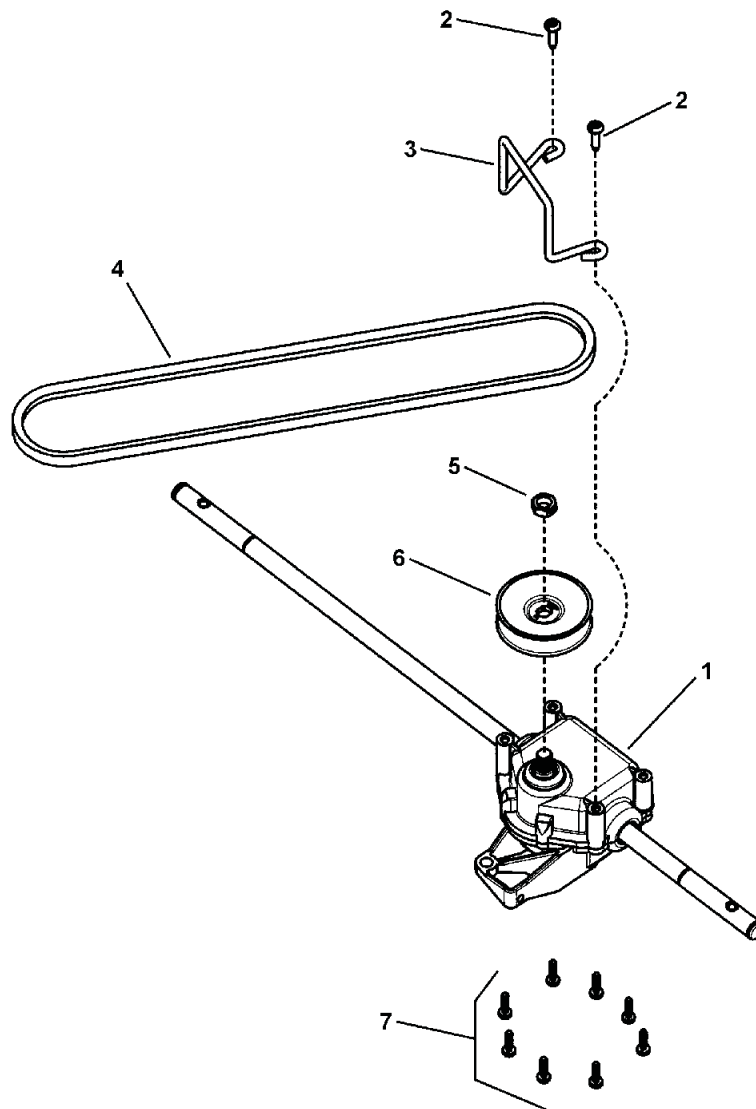
The above parts group applies to the following Mfg. Nos.:

7800671 - BBRR219BS

## Transmission Group

bbrd\_tra

NOTE: Unless noted otherwise,  
use the standard hardware torque  
specification chart.



The above parts group applies to the following Mfg. Nos.:  
7800671 - BBRR219BS

### **Transmission Group**

---

<b>REF NO</b>	<b>PART NO.</b>	<b>QTY.</b>	<b>DESCRIPTION</b>
1	7101245YP	1	TRANSMISSION, 21" WBM, RD
2	7091195SM	2	SCREW, #10-16 x 3/4" Pan Head Self-Tap, Combo
3	7100863YP	1	BELT GUIDE, Transmission
4	7100883YP	1	BELT, Traction Drive, 21" Pivot Handle Section 3L, 32.86 effective length
5	7091585SM	1	NUT, 3/8-16 Hex Center Lock, YZ
6	7100240YP	1	PULLEY, Trans Var Speed, LC WBM
7	7900032YP	8	SCREW, 7mm x 1 x .550 AB Point

Not for  
Reproduction

### **Footnotes**

---

**The above parts group applies to the following Mfg. Nos.:**

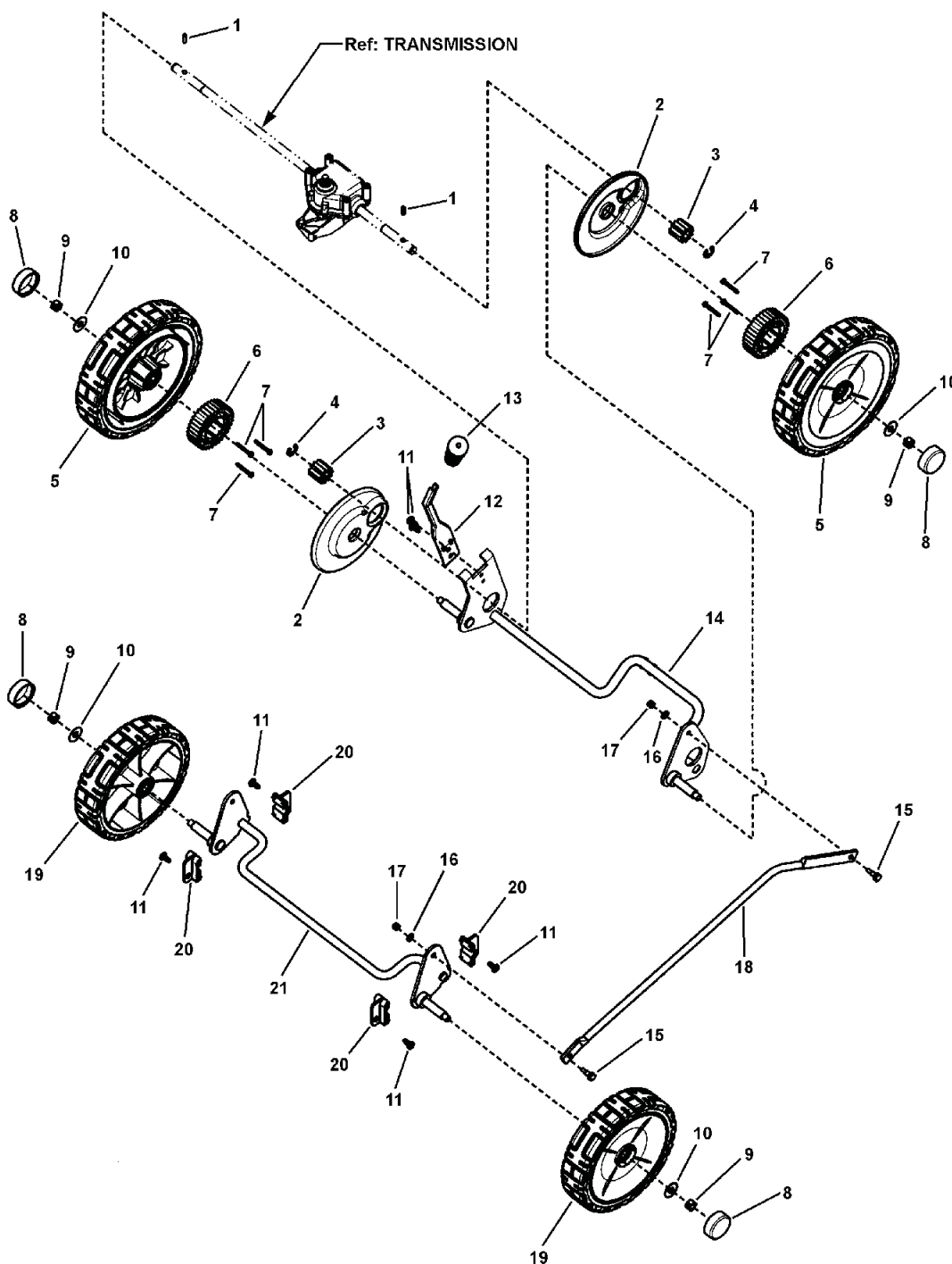
7800671 - BBRR219BS



## Wheels & Height-of-Cut Group

bbrdwhoc

NOTE: Unless noted otherwise,  
use the standard hardware torque  
specification chart.



The above parts group applies to the following Mfg. Nos.:  
7800671 - BBRR219BS

## **Wheels & Height-of-Cut Group**

<b>REF NO</b>	<b>PART NO.</b>	<b>QTY.</b>	<b>DESCRIPTION</b>
1	7100861YP	2	PIN, Axle
2	7101367YP	2	SHIELD, Dust, 21" WBM, RD
3	7100820YP	2	GEAR, Pinion
4	7014341YP	2	RETAINING RING
5	7500647YP	1	ASSEMBLY, Wheel, w/Bearing 9", Charcoal Gray (Includes Ref. No. 22)
6	7100914YP	2	GEAR, External Wheel
7	7091196SM	6	SCREW, #8 x 1-1/4, Hex Washer Self-Tap, Hi-Lo
8	7101351MA	4	HUBCAP, Round, Black
9	7091585SM	4	NUT, 3/8-16 Hex Center Lock, YZ
10	17X169MA	4	WASHER, 1" OD x .387 ID Flat
11	7900067YP	6	SCREW, 1/4-20 x .550 Torx Self-Tap
12	672278MA	1	LEVER, Spring, Height-Of-Cut
13	671297MA	1	GRIP, Height-Of-Cut
14	7400275YP	1	WELDMENT, Rear Crossbar 21" WBM, RD, YZ
15	7101774YP	2	BOLT, Shoulder, #10-24 Thread
16	7091552SM	2	WASHER, .219 x .500 x .049 Flat, BL
17	7091290SM	2	NUT, #10-24 Hex Nyloc
18	7101430BQYP	1	ROD, Lifter Link, 21" WBM, RD
19	7500540YP	2	ASSEMBLY, Wheel, 8 x 2 Idle, Charcoal Gray (Includes Ref. No. 22)
20	7101241YP	4	BUSHING, Front 21"
21	7400276YP	1	WELDMENT, Front Crossbar 21" WBM, RD, YZ
22	7101380YP	4	BALL BEARING, 1-1/8" OD, Flange (Not Illustrated)

### **Footnotes**

---

**The above parts group applies to the following Mfg. Nos.:**

7800671 - BBRR219BS

## Decals

NOTE: Unless noted otherwise, use the standard hardware torque specification chart.

bbrd\_dcl



The above parts group applies to the following Mfg. Nos.:

7800671 - BBR219BS

## **Decals**

---

<b>REF NO</b>	<b>PART NO.</b>	<b>QTY.</b>	<b>DESCRIPTION</b>
1	7104081YP	1	DECAL, Bad-Boy Small
2	7104082YP	1	DECAL, Controls Bad-Boy
3	7029782MA	1	DECAL, OPC Bail International Symbol
4	7101495YP	1	DECAL, CPSC, French/English
5	7101671YP	1	DECAL, French/English, WB Safety

Not for  
Reproduction

## **Footnotes**

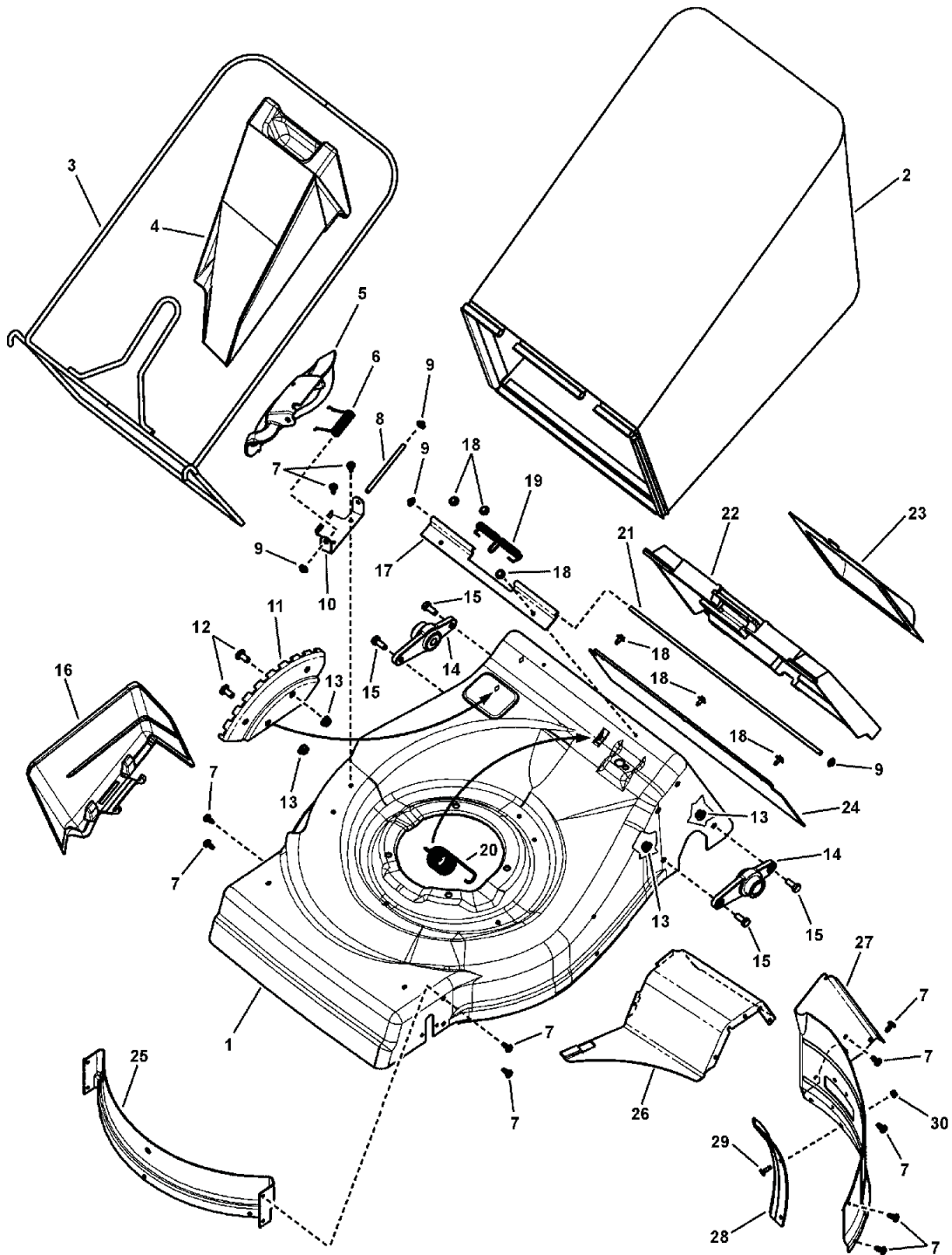
---

**The above parts group applies to the following Mfg. Nos.:**  
7800671 - BBRR219BS

## Mower Deck Group

bbrd\_mdg

NOTE: Unless noted otherwise,  
use the standard hardware torque  
specification chart.



The above parts group applies to the following Mfg. Nos.:  
7800671 - BBRR219BS

## Mower Deck Group

REF NO	PART NO.	QTY.	DESCRIPTION
1	7301050BQYP	1	DECK, 21" Rear Discharge, Non-Electric Start
2	7101304YP	1	GRASSBAG, 21" Rear Discharge
3	7101303AYP	1	BAG FRAME, 21" RD WBM
4	071250MA	1	PLUG, Mulching
5	7101437YP	1	COVER, 21" Mulching
6	166X38MA	1	SPRING, Torsion, Chute
7	7900067YP	11	SCREW, 1/4-20 x .550 Pan Head Self-Tap (Torx)
8	7101471YP	1	ROD, Mulch Cover Pivot
9	7091020YP	4	PUSHNUT, 1/4"
10	7300590BQYP	1	BRACKET, Chute Deflector
11	7300587BQYP	1	INDEX PLATE, Height-Of-Cut, 21" WBM, RD
12	7091508SM	2	BOLT, 5/16-18 x 3/4" Round Head Short Square Neck, GR 5, YZ
13	7091601SM	6	NUT, 5/16-18 Hex Flange lock, YZ
14	7501070YP	2	ASSEMBLY, Bearing Holder, 21" WBM, Rear Discharge (Includes Ref. No. 31)
15	7091318SM	4	SCREW, 5/16-18 x 3/4" Hex Head Cap, GR 5, YZ
16	7101490YP	1	CHUTE, 21" Side Discharge
17	071410MA	1	SPACER, Rear Door, 21" WBM
18	7091286YP	5	SCREW, #10-24 x .50 Hex Washer Self-Tap Sems
19	166X33MA	1	SPRING, Torsion
20	7101434YP	1	SPRING, Extension, Height-Of-Cut Assist
21	7101314YP	1	ROD, Rear Door Pivot, 21" Rear Discharge
22	071409MA	1	DOOR, 21" Black
23	7300723BQYP	1	TRANSMISSION COVER, Rear, 21" WBM
24	7101553YP	1	DEFLECTOR, Rear, 21" WBM, RD
25	7300585BQYP	1	BAFFLE, Front 21" WBM, RD
26	7300591BQYP	1	BAFFLE, Right Rear, 21" Walk-Behind-Mower, RD
27	7300589BQYP	1	BAFFLE, Left Rear, 21" Rear Discharge, WBM
28	7101502YP	1	BAFFLE, Extension, 21" RD WBM
29	7091711YP	3	BOLT, #10-24 x 5/8" Flat Head Square Neck, YZ
30	7091290SM	3	NUT, #10-24 Hex Nyloc
31	7078243YP	1	BALL BEARING, Axle (Not Illustrated)

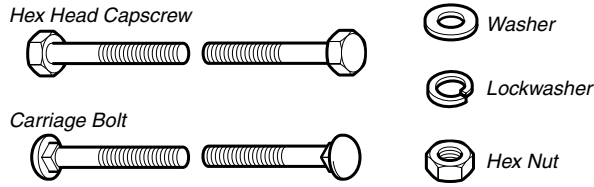
### Footnotes

The above parts group applies to the following Mfg. Nos.:

7800671 - BBRR219BS

# Hardware Identification & Torque Specifications

## Common Hardware Types

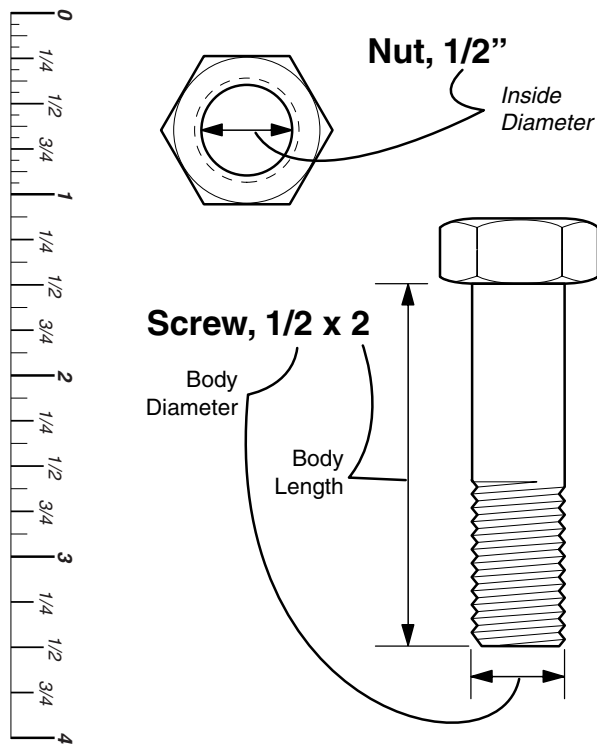


## Standard Hardware Sizing

When a washer or nut is identified as 1/2", this is the *Nominal size*, meaning the *inside diameter* is 1/2 inch; if a second number is present it represents the *threads per inch*

When bolt or capscrew is identified as 1/2 - 16 x 2", this means the *Nominal size*, or *body diameter* is 1/2 inch; the second number represents the *threads per inch* (16 in this example, and the final number is the *body length* of the bolt or screw (in this example 2 inches long).

**The guides and ruler furnished below are designed to help you select the appropriate hardware and tools.**



Torque Specification Chart						
FOR STANDARD MACHINE HARDWARE (Tolerance ± 20%)						
Hardware Grade	No Marks SAE Grade 2		SAE Grade 5		SAE Grade 8	
	in/lbs ft/lbs	Nm.	in/lbs ft/lbs	Nm.	in/lbs ft/lbs	Nm.
8-32	19	2.1	30	3.4	41	4.6
8-36	20	2.3	31	3.5	43	4.9
10-24	27	3.1	43	4.9	60	6.8
10-32	31	3.5	49	5.5	68	7.7
1/4-20	66	7.6	8	10.9	12	16.3
1/4-28	76	8.6	10	13.6	14	19.0
5/16-18	11	15.0	17	23.1	25	34.0
5/16-24	12	16.3	19	25.8	27	34.0
3/8-16	20	27.2	30	40.8	45	61.2
3/8-24	23	31.3	35	47.6	50	68.0
7/16-14	30	40.8	50	68.0	70	95.2
7/16-20	35	47.6	55	74.8	80	108.8
1/2-13	50	68.0	75	102.0	110	149.6
1/2-20	55	74.8	90	122.4	120	163.2
9/16-12	65	88.4	110	149.6	150	204.0
9/16-18	75	102.0	120	163.2	170	231.2
5/8-11	90	122.4	150	204.0	220	299.2
5/8-18	100	136	180	244.8	240	326.4
3/4-10	160	217.6	260	353.6	386	525.0
3/4-16	180	244.8	300	408.0	420	571.2
7/8-9	140	190.4	400	544.0	600	816.0
7/8-14	155	210.8	440	598.4	660	897.6
1-8	220	299.2	580	788.8	900	1,244.0
1-12	240	326.4	640	870.4	1,000	1,360.0

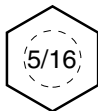
### NOTES

- These torque values are to be used for all hardware excluding: locknuts, self-tapping screws, thread forming screws, sheet metal screws and socket head setscrews.
- Recommended seating torque values for locknuts:
  - for prevailing torque locknuts - use 65% of grade 5 torques.
  - for flange whizlock nuts and screws - use 135% of grade 5 torques.
- Unless otherwise noted on assembly drawings, all torque values must meet this specification.

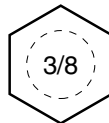
## Wrench & Fastener Size Guide



1/4" Bolt or Nut  
Wrench—7/16"



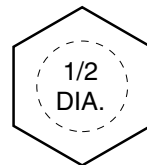
5/16" Bolt or Nut  
Wrench—1/2"



3/8" Bolt or Nut  
Wrench—9/16"



7/16" Bolt or Nut  
Wrench (Bolt)—5/8"  
Wrench (Nut)—11/16"



1/2" Bolt or Nut  
Wrench—3/4"



Not for  
Reproduction

**IT IS THE POLICY OF BRIGGS & STRATTON CORP. TO IMPROVE ITS PRODUCTS  
WHENEVER IT IS POSSIBLE AND PRACTICAL TO DO SO. WE RESERVE THE RIGHT TO  
MAKE CHANGES OR ADD IMPROVEMENTS AT ANY TIME WITHOUT INCURRING ANY  
OBLIGATION TO MAKE SUCH CHANGES ON PRODUCTS.**



[www.badboymowers.com](http://www.badboymowers.com)  
1-877-370-7504